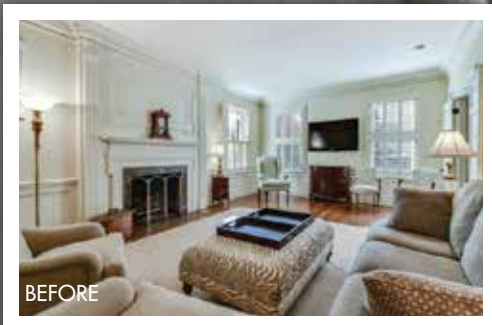


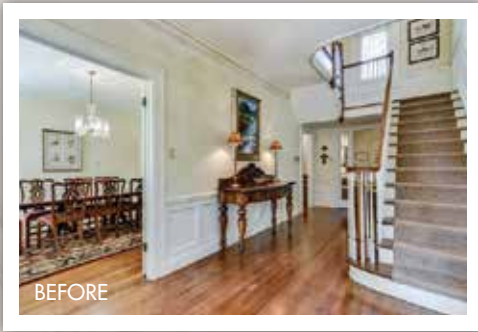
Lone Star *Local Color*

WHEN A CONTEMPORARY ARTIST WITH A PENCHANT FOR OLD-WORLD CHARM TEAMS UP A WITH DESIGNER KNOWN FOR PUTTING A FRESH TWIST ON TRADITION, THE END RESULT IS AN INSTANT CLASSIC.

TEXT ELEANOR LYNN NESMITH | PHOTOGRAPHY MICHAEL HUNTER



BEFORE



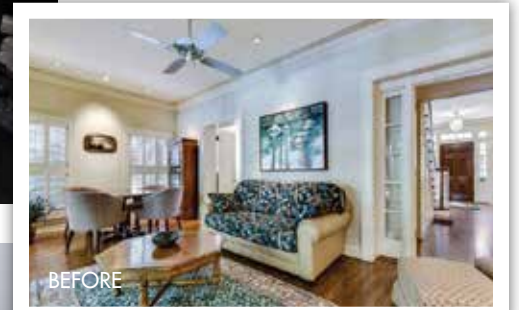
BEFORE

A whimsical checkered pattern now dances across the foyer floor.



BEFORE

Previous pages and left: Symmetry with a fresh twist animates the living room. "We simply painted the original mantel," says Nix. "We didn't want to lose the soul of the house." Below: A Quadrille wallpaper and a pendant from Serena & Lilly enliven the sunroom. Wire-mesh panel inserts transform a cabinet wall into practical and pretty storage.

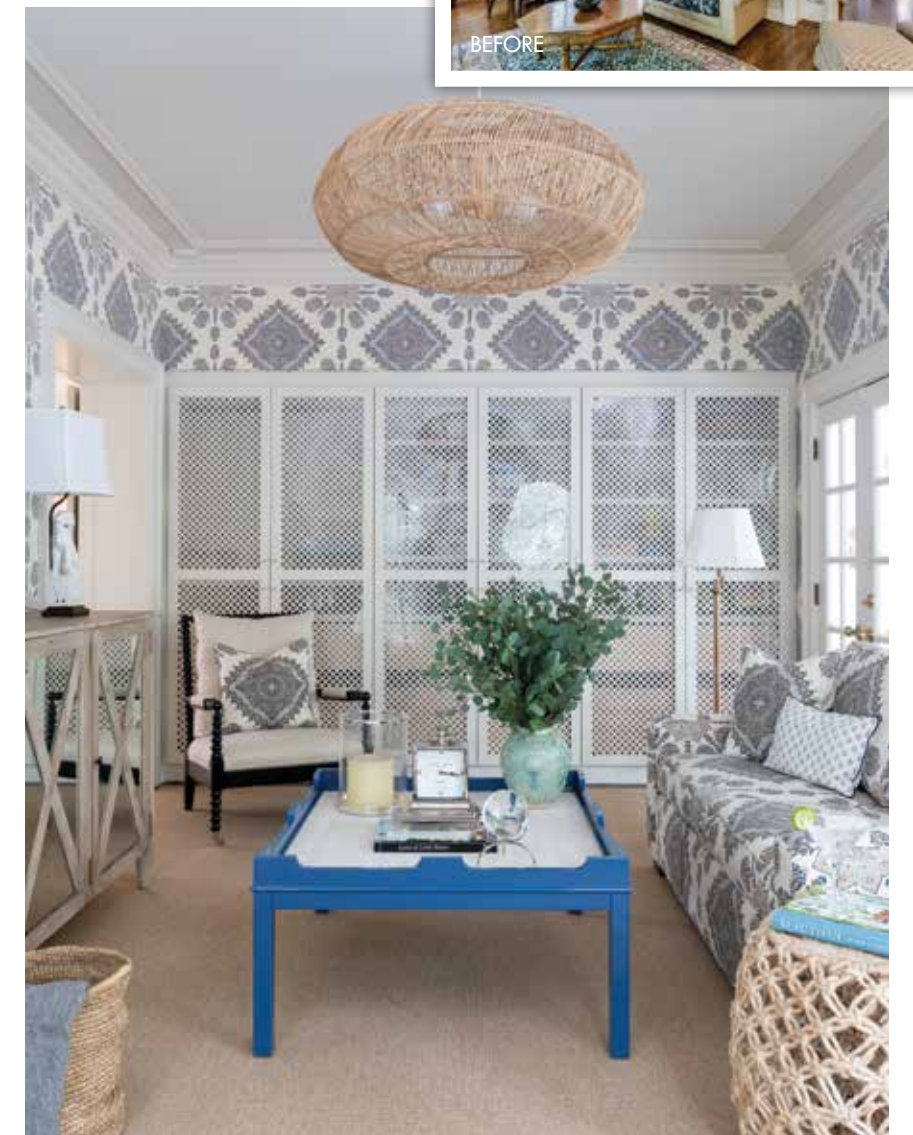


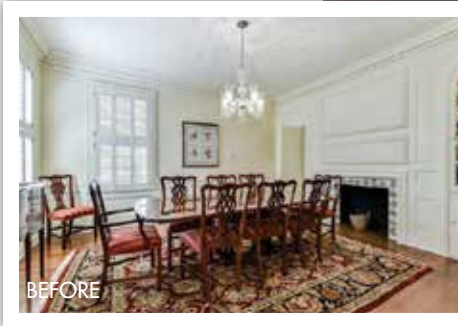
BEFORE

Six years ago, Erin and William Tice relocated from New York City to Austin, Texas, and settled into a charming bungalow in a desirable neighborhood. They had no intention of moving anytime soon. "But two baby boys and two dogs later, we definitely needed more space," says Erin Tice. When a historic 1940s central hall Colonial located three blocks away became available, they jumped at the opportunity and brought in local designer Kristen Nix and builder Carlie Bailey. "The house was structurally sound, and it had good bones and all the right ingredients," says Nix.

From the outset, it was a true collaboration with everyone in agreement the renovation should focus on vivid cosmetic changes and better use of existing spaces. "I loved the fact that we could have proper living and dining rooms, while opening up the kitchen and den for a generous casual family space," says Tice. The ambitious nine-month renovation transformed dated interiors into a showstopper that perfectly balances the designer's modern sensibilities and clean lines with the homeowner's traditional tastes and love of collections.

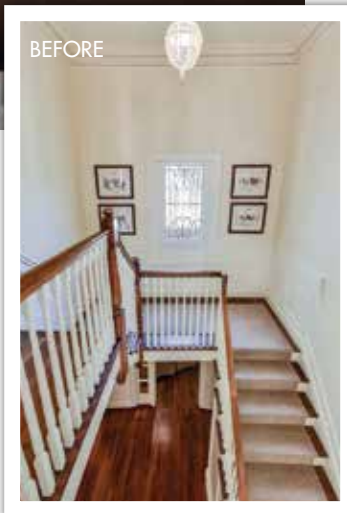
To make a memorable first impression, Nix



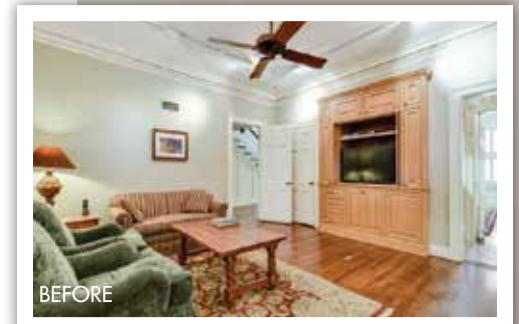
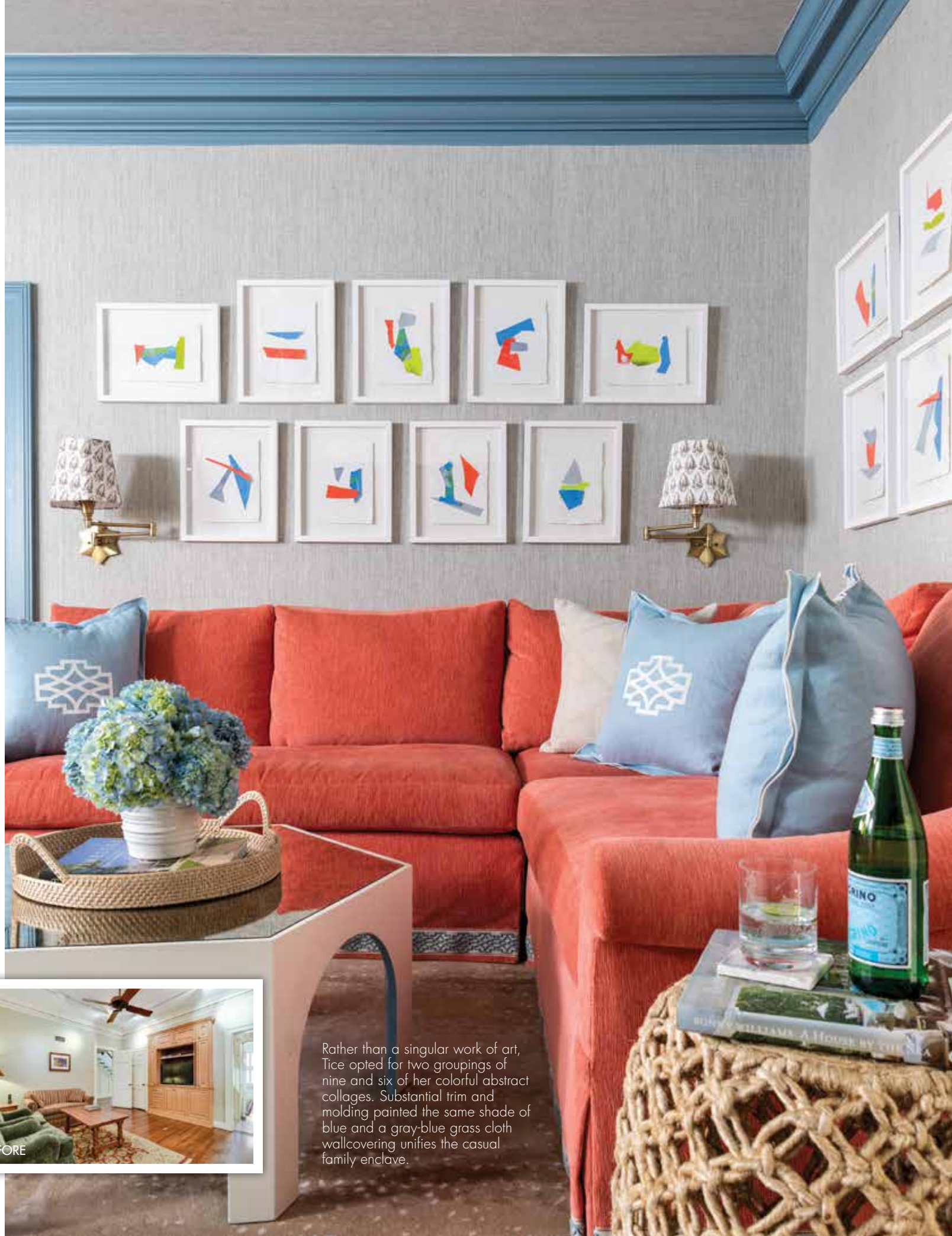


Opposite and below, left: An ornate chandelier pairs with a few contemporary touches to define the formal dining room. Tice's flair for linens and tabletop decor makes any setting her own. Above: A generous island painted a grayish blue and crowned with a butcher block top resides front and center in the open-concept kitchen. Below, right: A comfortable banquette anchors a sunny corner.

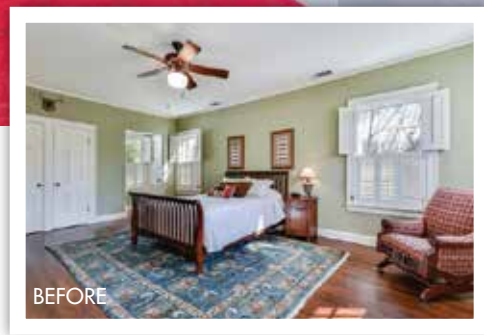




came up with a blue-and-cream checkerboard pattern for the central hall foyer floor. “Some clients might be afraid of a painted floor in a high-traffic area, but Erin and Bill weren’t worried about wear and tear and embraced the idea creating a patina,” she says. Large framed cased openings establish a gracious interchange between the foyer and sunny formal rooms along the front of the house. Music and art inspired the layout of the living room, starting with a baby grand piano anchoring one corner. Tice worked in public relations before her children were born, but in 2018, she started painting full-time. “For the living room, I decided to commission myself,” she says. While she admits she is her



Rather than a singular work of art, Tice opted for two groupings of nine and six of her colorful abstract collages. Substantial trim and molding painted the same shade of blue and a gray-blue grass cloth wallcovering unifies the casual family enclave.



own toughest critic, her 48x72-inch abstract painting above the sofa is undeniably the focal point of the gracious room. Furnishings and fabrics restored original architectural details, and a muted Aubusson layered atop a jute rug intermingle freely, regardless of age and style.

The dining room is another collaborative tour de force. “Erin loves to cook and entertain more formally,” says Nix. “The dining room is colorful, feminine, and Southern. It’s her domain.” A sage green lacquered wallpaper on the ceiling complements the sumptuous floral landscape wallpaper mural on the room’s long wall. An abstract painting by Catherine Booker Jones above the fireplace introduces a delightful, unexpected modern touch.

As design trends evolve and the way families live change, a home with solid architecture and classic details evolves and can become even better with age. Fittingly, a partial wall (actually added at some point) came down to create an open-concept family room and kitchen. Blue-gray grass cloth wraps the walls and ceiling, while heavy molding, trim, and the island are painted a unifying blue.

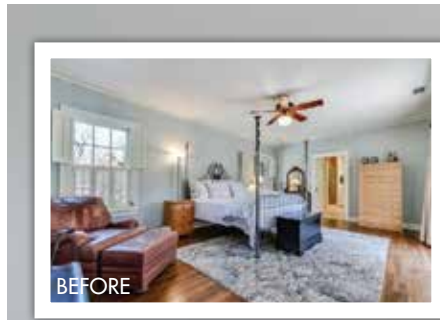


Opposite page: Nix delivered a playful bedroom rendered in blue and white with pops of red for the Tices’ older son. The existing drywall in the room had experienced water damage, and during the renovation they discovered the shiplap siding underneath. “That was an exciting find, and we made the most of it,” says Nix. An overscaled sailing print, a vintage American flag, and a whimsical navy-and-white tent round out the nautical theme. Above: The vanity, trim, molding, and shutters are painted the same shade of blue for continuity. Right: Nix outfitted William’s home office with a masculine feel and deeper tones.

Design themes continue as the gracious stairway rises up, and natural light dances across the landing. The sumptuous master suite also echoes the essence of Tice’s aesthetic. “She definitely has a vision,” says Nix. “I just make it come to life.” She carried it out by confidently drawing upon an old-school pattern-on-pattern effect, outfitting the space in a Quadrille Arbre De Matisse print. “My husband did question why we needed a canopy bed,” says Tice. “I told him because I’ve wanted one since I was a little girl, and the room is large enough to handle it.” Simple white linens and a pair of white upholstered armchairs let the drama of the canopy bed and walls take center stage.

Through the process, Nix, Bailey, and Tice forged a professional bond, as well as a true friendship. “I guess you could call us the girl dream team,” says Nix. It was obviously a winning formula, and at the end of the day, the renovated home stands as a testament to the trio’s diverse talents and the art of collaborating.





The sumptuous master suite is both exuberant and tranquil. The layering of the custom canopy bed, benches, and draperies is a testament to the collaborative talents of Nix and Tice. Below: Attic storage and a closet were reconfigured to add needed space to the master bath.

